

Installation, Operation and Maintenance Instructions

Mobile Emergency Safety Shower (STD-40K/45G)

- **Standard model**
- **Optional insulated jacket**
- **Optional heated jacket**

Warranty Information

Hughes Safety Showers Ltd guarantees the products it manufactures or sells against defects in workmanship and material for a period of one (1) year from the date of invoice. The product must be used, maintained and installed according to the instructions and procedures provided, or this warranty is void. Any alteration or modification of the product will also void this warranty. Hughes Safety Showers obligation under this warranty is limited to repair or replacement of defective products. No other warranty or remedy shall be provided. This warranty specifically does not guarantee or cover payment or reimbursement of any damages or consequential damages other than repair or replacement of the product.

Any claim under this warranty must be made in writing within twelve (12) months of the date of invoice. The owner must prepay shipping costs of all products returned to Hughes Safety Showers Ltd under this warranty. If it is determined that the product is defective in material and /or workmanship the repair or replacement will occur, at Hughes Safety Showers option, at no charge and return freight prepaid by Hughes Safety Showers. All other return of the product to the owner shall be at the owner's expense.

Proper use by the customer is necessary for the effectiveness of the product, as well as the safety of those using the same. The user is solely responsible to determine the suitability of any Hughes Safety Showers product for any intended use. The user assumes all risk and liability for use of any Hughes Safety Showers product. User specifically acknowledges receipt of proper instructions regarding the use of the product in the original packaging and disclaims any consequential damages to person or property, damages for loss of use, lost time, loss of profit, lost income, loss of the Hughes Safety Showers product itself and/or other incidental or consequential damages other than as warranted by this limited warranty. User accepts the responsibility of removing from service any product that becomes worn out, unusable, unfit for the intended use or defective in any way such as to make the product a potential safety hazard. Hughes Safety Showers is unable to undertake such obligations or responsibilities on behalf of the user as the user is in sole possession and control of the product.

General Considerations

When planning the installation of emergency safety showers and eye/face wash equipment, the advice of a qualified first aid representative or medical advisor should be sought to establish the most suitable location and procedures for first aid and decontamination.

Installation should be in accordance with local legislation and industry standards such as EN15154 and/or ANSI Z358.1-2014 recommendations. Visit www.hughes-safety.com/standards for more information.

Location & Accessibility

- Emergency safety showers and eye/face wash equipment must be installed within 20 metres, or 10 seconds reach of, and on the same level as, a potential hazard. Where strong acids or caustics are used, equipment must be immediately adjacent to the hazard and outside of any spray paths.
- Equipment must be in a prominent position, free from any obstructions and clearly visible.
- Adequate drainage should be available in the area around and underneath the safety shower or eye/face wash. Consideration should be given to the placement of equipment in the vicinity of the safety shower that are sensitive to water or diluted chemicals, notably electrical items.
- For equipment located indoors, wastewater must be contained for subsequent safe disposal or there must be adequate drainage. Procedures must be in place for cleaning residue water after safety shower use.
- Loose objects or gravel should not obstruct the operation of the shower where walk-on foot panels or foot treadles are fitted.

Visibility

- An ISO 3864.1 compliant safety sign should be displayed on or near the safety shower or eye wash. The sign should be well positioned so it is visible to all within the hazardous area.
- The area must always be well lit with the operating mechanism remaining clearly visible.

Installation and Commissioning

Assembly and mounting

The safety shower is supplied ready assembled.

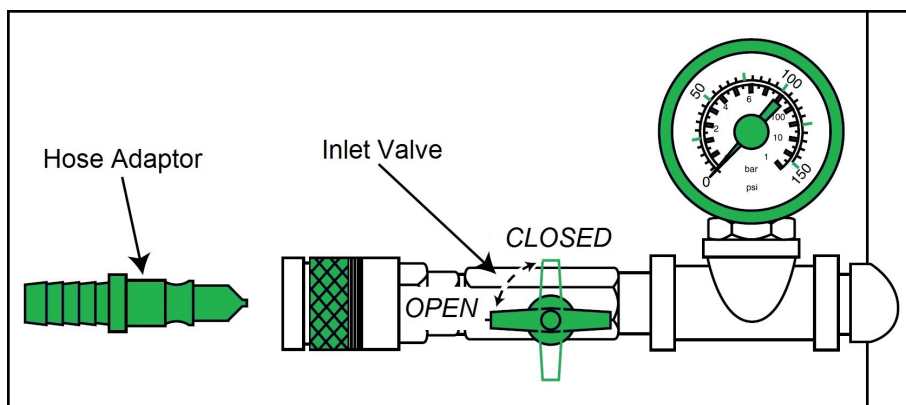
Once in position, the stability should be tested to ensure it is safe and poses no danger to the user.

Shower arm should be attached prior to use.

Filling and Pressurizing the Cylinder

1. Connect the mains water supply hose to the quick release hose adaptor.
2. Connect the hose adaptor into the quick release connector.
3. Turn the mains water supply on. (The recommended water temperature is 15-35C)
4. Open the inlet valve and leave for approximately 20 minutes (until the water stops flowing.)
5. The recommended water pressure is approximately 3 – 5.5 Bar g (43.5-80 PSI) and **MUST NOT exceed 6 Bar g.(87 PSI)**
6. Check the water pressure gauge against the mains static pressure reading.
7. Close the water inlet valve after filling is complete.
8. Disconnect the hose adaptor, ensuring it is not permanently attached to the water supply.
9. The unit is now ready for use.
10. Occasionally check air pressure via Schrader valve at the top of cylinder. 1.2 Bar g (17.4 PSI) when tank is empty.

CAUTION: For units with electrical heating, it is essential that a water supply is established, and the equipment is checked before connection to an electrical supply.



Installation of eye and eye/face washes

If necessary, the flow rate of the eye/facewash diffusers be adjusted via the three-pronged regulator or using the grub screws on each side of the tee-piece in the centre of the eye/facewash bowl. A 4mm allen key will be required for this adjustment. (See fig. 1)

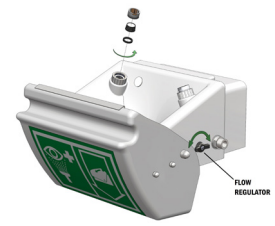


Fig. 1

Water supply

Emergency safety showers and eye/face wash equipment must be fed from a potable water supply – drinking water or water of a similar quality.

Minimum Supply Pressure: 3.5 Bar (50 PSI)

Maximum Supply Pressure: 6 Bar (87 PSI)

Minimum flow rates must be in accordance with International and European standards, namely EN15154 or ANSI Z358.1-2014.

Electrical supply

Where an emergency safety shower, eye or eye/face wash unit requires an electrical supply, either for heating, cooling, alarms or lighting, then the supply should conform to the requirements as detailed in the job specific electrical drawings.

Electrical equipment fitted to these units should be supplied through a safety protection device (MCB, RCD, RCCB for example) to provide additional protection against electric shock while also ensuring satisfactory protective bonding arrangements are in place. Please consult a qualified electrician when installing & commissioning electrical equipment.

CAUTION: Safety showers with non-certified electrical equipment cannot be used in hazardous areas, as per IEC-60079-10 and API RP 505.

To comply with ATEX Directive 2014/34/EU please note: *“The enclosure is non-conducting and may generate an ignition-capable level of electrostatic charges under certain extreme conditions. The user should ensure that the equipment is not installed in a location where it may be subjected to external conditions (such as high-pressure steam) which might cause a build-up of electrostatic charges on non-conducting surfaces. Additionally, cleaning of the equipment should be done only with a damp cloth.”*

Electrical details

Heated jacket

Voltage: 230VAC

Power rating: 120W (1.5A on start-up)

Operation

Employees working within hazardous areas must be trained in the use and location of emergency safety showers or eye/face wash equipment. Instructions for all emergency equipment should be readily available and accessible to personnel.

Safety shower activation methods (where fitted):

- Pull handle
- Push down lever
- Foot treadle
- Walk on foot panel
- Push activated panic bar (emergency tank showers only)

For optimum safety, the valves remain open when activated and must be shut off manually.

Eye and eye/face wash activation methods (where fitted):

- Lift lid
- Pull lid down
- Push plate
- Push down lever
- Lock-on actuating button
- Foot treadle

Operation cont.

Please note:

- After each use, the overhead arm should be removed and drained, and the cylinder refilled as per the instructions on page 2.
- The heated jacket must be constantly powered on in order to provide effective frost protection.
- For details on ambient operating temperatures of each model refer to the product datasheet.

Maintenance

Regular servicing and maintenance of emergency safety shower and eye/face wash equipment is essential to ensure correct functionality. All services must be recorded to ensure a full history is maintained as per European and International standard requirements. Water should be emptied completely if storing.

Servicing and cleaning

To discuss Hughes service contract options call us on +44 (0)161 430 6618 or email service@hughes-safety.com

All equipment should be visually inspected at least once a week to determine if the flushing fluid needs to be changed or supplemented.

It is recommended to replace the water within the unit at weekly intervals.

The addition of water preservative will help prevent bacteria and prolong the water quality. If water preservative is used, the unit should be cleaned and refilled every 120 days.

Follow the steps below to add water preservative to the unit:

1. Make sure the unit is empty and depressurized.
2. Remove the top of the quick release coupling (see Fig.2).
3. Open shower ball valve by pushing the shower lever down.
4. Pour two bottles of water preservative down the vertical piping (see Fig.3).
5. Wait 30 seconds to allow the preservative to make its way to the tank.
6. Close the shower ball valve by pulling the lever up.
7. Fill with water as per the instructions on page 2.
8. Repeat every 120 days or after each use.

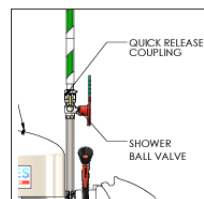


Fig. 2



Fig. 3

Regular cleaning of the outside of the emergency equipment is recommended. Abrasives or solvents must not be used to clean the unit as this can damage the surface or affect the instruction stickers.

Safety showers:

- Remove the shower head/nozzle periodically to clean, disinfect and ensure any build-up of debris or bacteria is removed.

Eye and eye/face washes:

- The fine mesh strainers should be cleaned regularly, particularly in the first 6 months of service as there may be contamination of the water from dirt, jointing compounds, etc. which may have remained in the pipework following installation, despite the recommended flushing procedure.
- Nozzles should be cleaned regularly; the frequency will depend on the ambient conditions of the installation.
- Diffusers can be unscrewed for cleaning.
- To clean the 'Y' strainer filter basket remove the strainer housing using a 22mm socket. The filter basket can be found inside the housing and can easily be removed for cleaning. To ensure hygienic operation, the diffusers and filter baskets should be replaced if they become excessively dirty or damaged.
- After any cleaning or maintenance work has been carried out on the equipment it is imperative that the eye and eye/face washes are given a full operational test and any flow regulator or volume control screws are re-adjusted to ensure optimum performance. It is recommended that eye wash diffusers are replaced every six months.

Electrical equipment:

- Thorough visual inspections should be carried out to check for external damage to the electrical units, their cables or the junction boxes. Should any part be found to be damaged, this must be reported and repaired or replaced as soon as possible. A further test should be carried out to establish that it functions as intended. Any additional electrical tests should be carried out at the discretion of a qualified electrician.

Out of Service Procedure

In the event of an emergency safety shower, eye bath or eye/face wash unit being temporarily out of service, a standard procedure should be followed.

- Place a sign on the unit indicating it is 'Out of Service'.
- Notify the relevant manager/supervisor of the area that the unit is out of service
- Prohibit or suspend any work where there is a significant hazard requiring use of the unit
- If work cannot be prohibited or suspended, a portable unit must be provided to supply the initial wash only, after which it will be necessary to move the person to a plumbed emergency safety shower, eyebath or eye/face wash unit to complete the procedure.

Note: Portable units are not acceptable as a long-term substitute for permanent locations.

A selection of our emergency safety showers are available to hire. Ensure your workforce are protected around the clock, visit www.hughes-safety.com/hire for more information.